

# UPPLE HADID (Pvt) Ltd.



Bhasha Dam Project





## ABOUT US

Upple Group is a well-established business house of Pakistan with over 30 years of experience in steel and metal industry with proven track record, established credibility and hundreds of satisfied customers. The group mainly comprises of:

- Upple Hadid (Pvt) Ltd.
- Pearl Apple (Steel Trading)

Upple Hadid is a leading and fastest growing company specialized in metal construction works, especially in delivering turnkey solutions in pre-engineering buildings, sandwich panels (EPS, PU and PIR) LGS and cable tray.

It has become a highly successful market leader in a very short period of time with capability and ability backed by its professional management, sophisticated systems, rich resource base, high-end software (e.g. MBS, STAAD PRO, SAP 2000, TEKLA, SAP B1) exceptional quality controls, HSE framework, seamless supply chain and highly qualified & well trained workforce.

## OUR SPECIALIZATION

We specialize in providing one window solution including consultancy, design, fabrication and installation of high quality pre-engineered steel buildings, steel structure products, and Tanks / Vessels. Since establishment of our Pre-Engineering steel structures division, we provide customers with full steel structures such as factories, warehouses, high rise buildings, heavy industry, shopping malls, exhibition centers, show rooms, dairy and marquee sheds.

Our factory is among the largest & most advanced production facilities in Pakistan. UHPL has production capacity:

	<u>Yearly</u>
Steel structure fabrication / Cold forming	30,000 MT
Sandwich Panels	12 million Sft.
Storage Tank / Bowser Tank	1,500 MT

## VISION

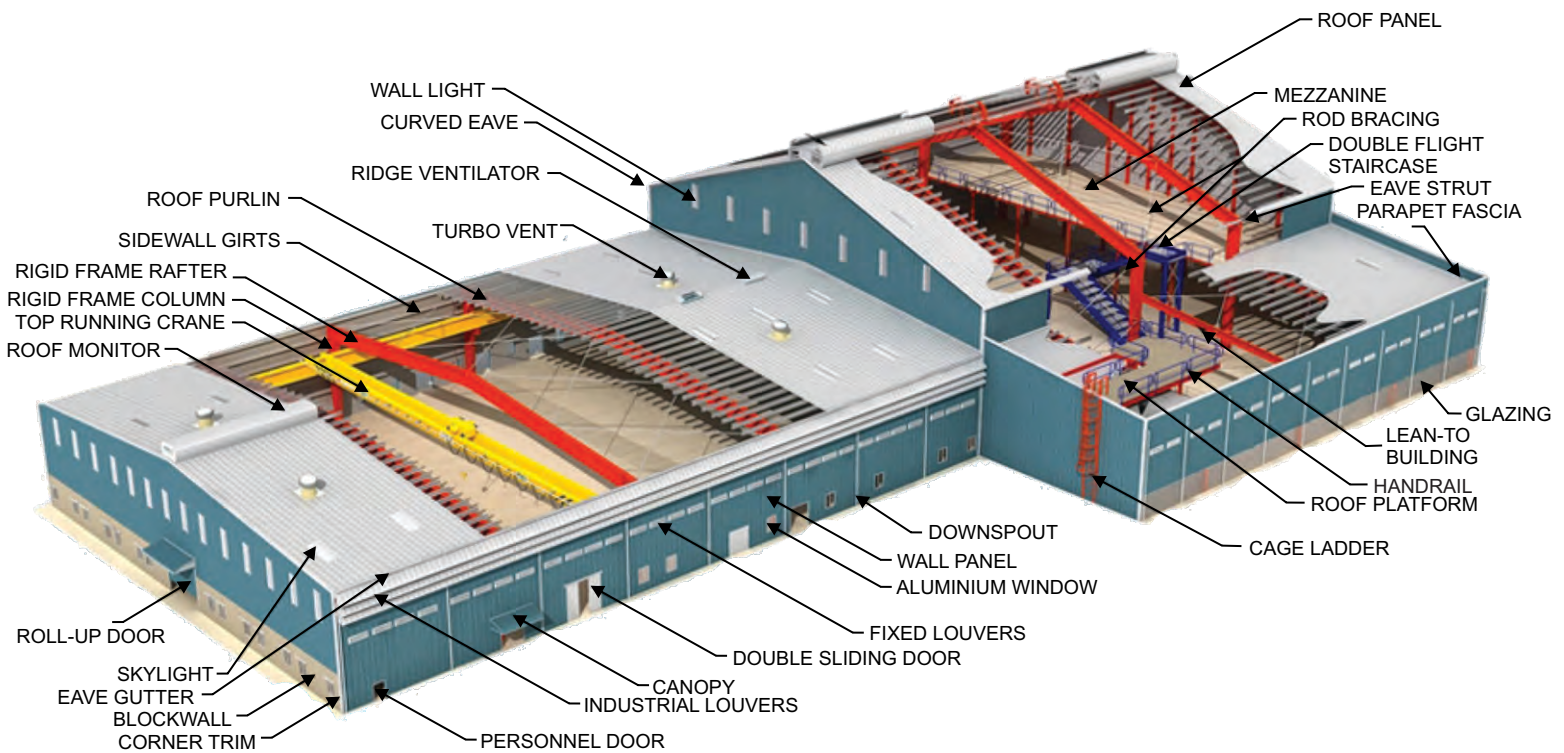
Upple Hadid becomes the leading steel structures company in terms of revenue, systems, quality, products and services around the globe.

## MISSION

Upple Hadid provides products and services to bring prosperity and sustainable developments for our customers, employees, partners and vendors.



# WHAT WE DO



## ADVANTAGES OF PRE-ENGINEERED BUILDING

Pre-engineered building has many advantages over R.C.C and masonry buildings which are:

- Reduction in Construction Time
- Lower Cost
- Flexibility of Expansion
- Quality Control
- Very Low Maintenance
- Energy Efficient Roofing and Wall Systems
- Architectural Versatility
- Systems Availability and Compatibility
- Excellent Strength to Weight Ratio
- Less Labour Involved
- Greater Clear Spans
- Portable

## TARGETED INDUSTRIES

- Auto Sector
- Chemicals
- Plastic
- Steel Mills
- Pipe Mills
- Bulk Storage
- Food Processing / Beverages
- Cement
- Sports Stadiums
- Sugar / Rice Mills
- Paper Mills
- Warehousing / Packaging / Logistics
- Electronics
- Glass
- Air Craft Hangers
- OMC
- Dairy and Marquee Sheds
- Showrooms / Display Centers

# COLD TECH REFRIGERATION SYSTEM

- COLD STORAGE
- CONTROLLED ATMOSPHERE STORE
- RIPENING ROOMS
- PU/PIR SANDWICH PANELS

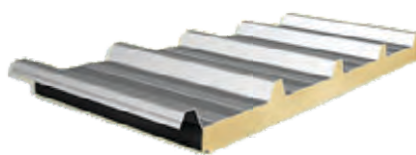


## SANDWICH PANELS

Sandwich panels are factory injected, using rigid poly Iso-Cyanurate Foam or Expanded Poly-Styrene Foam with outstanding insulation value. The sandwich panels have steel and aluminum single & double skin.

## SANDWICH PANELS FEATURES

Sandwich Panels are today used worldwide as insulation against temperature extremes. The building industry has adopted Poly Iso-Cyanurate insulation as one of the best materials to control the interior conditions of the buildings to save energy.

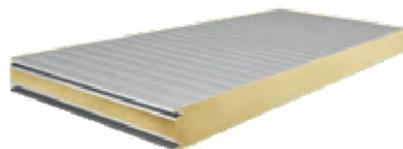
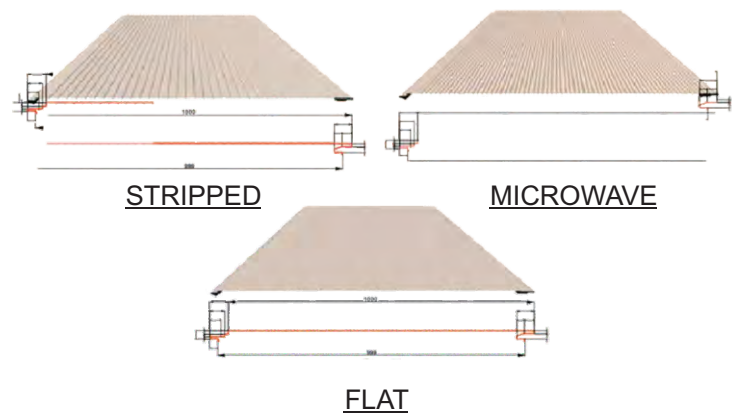


## PU/PIR PANELS

Poly Iso-Cyanurate (PU / PIR) are thermosetting plastics, manufactured by mixing two basic components (an

Iso-Cyanate and a polyol) with the addition of smaller qualities of chemicals such as catalyst and a blowing agent to create the foam. This blowing agents, which remains as a low pressure gas in the foam cells, is a fluorocarbon with a very low thermal conductivity in commercially available building insulation.

**Panel Thickness: 50 – 200 mm**  
**Density: 38 - 42 Kg / m<sup>3</sup>**  
**K Value: 0.022 W / mK**



## EPS PANELS

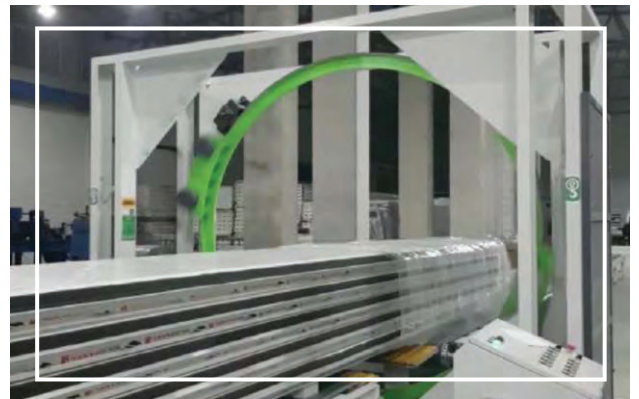
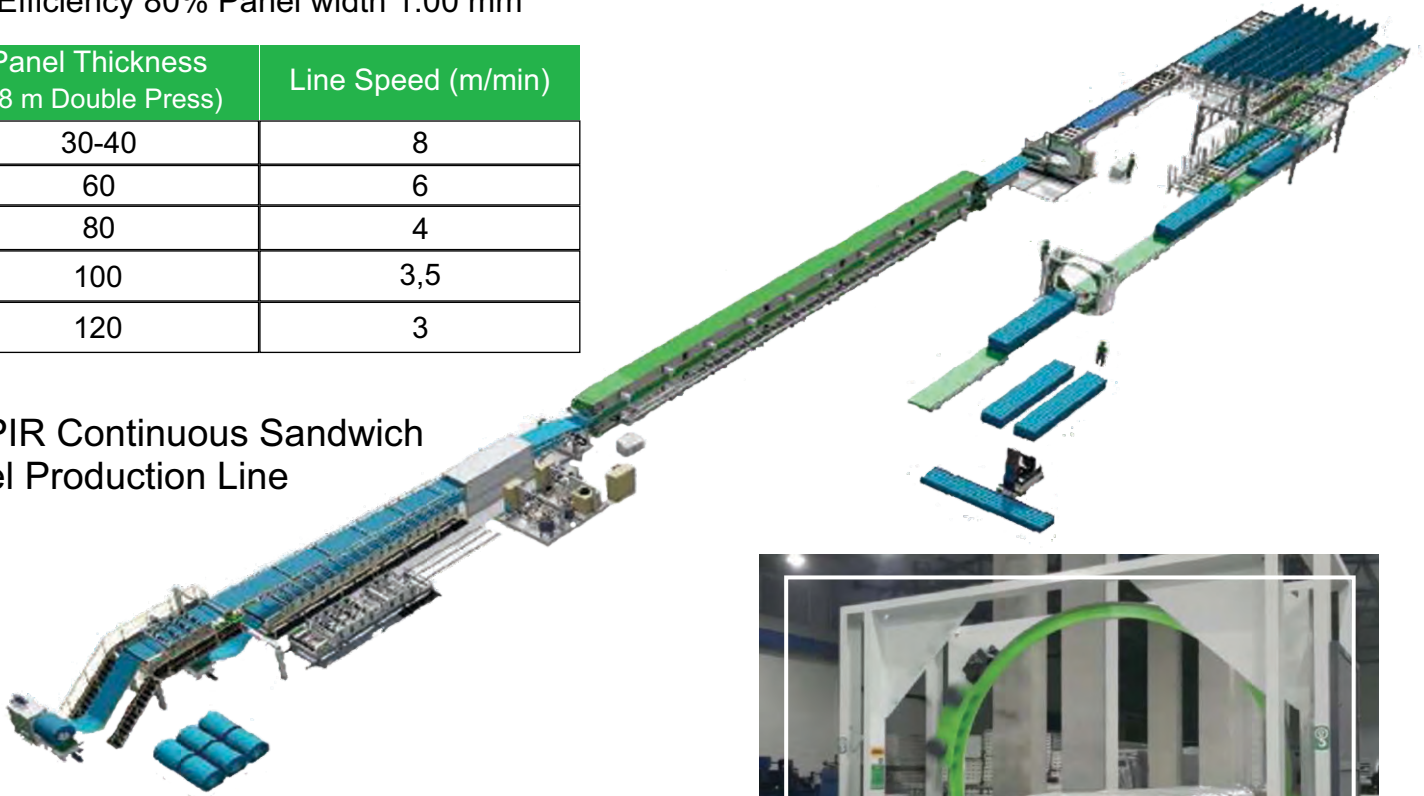
Expanded Poly Styrene (EPS) panels are made up of Polystyrene which is a synthetic aromatic hydrocarbon polymer made from the monomer styrene. Polystyrene can be solid or foamed. General-Purpose polystyrene is clear, hard and rather brittle. It is an inexpensive resin per unit weight.

# SANDWICH PANEL LINE

Efficiency 80% Panel width 1.00 mm

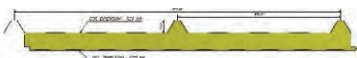
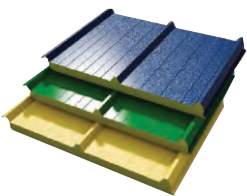
Panel Thickness (18 m Double Press)	Line Speed (m/min)
30-40	8
60	6
80	4
100	3,5
120	3

PU-PIR Continuous Sandwich Panel Production Line

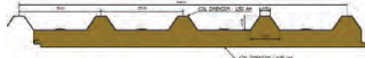
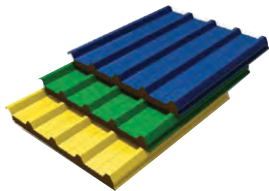


## PANELS PROFILE

ROOF PANELS 3 RIBS



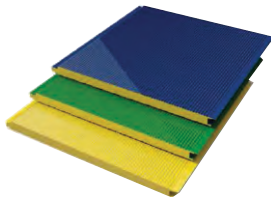
ROOF PANELS 5 RIBS



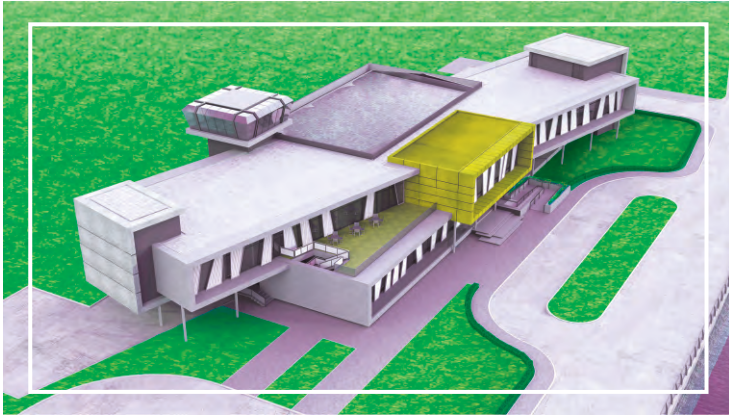
SECRET FIX PANELS  
FLAT FACE MODEL



SECRET FIX PANELS  
MICROWAVE MODEL



# MULTI STORY BUILDINGS



Multistory Buildings are ideal for offices and other commercial uses. Multistory Buildings, utilizing the PEB approach, are not only more economical than traditional methods of construction but are often constructed in half the “normal” time.

In addition to speed of construction and the economy of supply, pre-engineered buildings can be neat and elegant in appearance when accessorised with parapet walls and accented with contrasting trim colour.

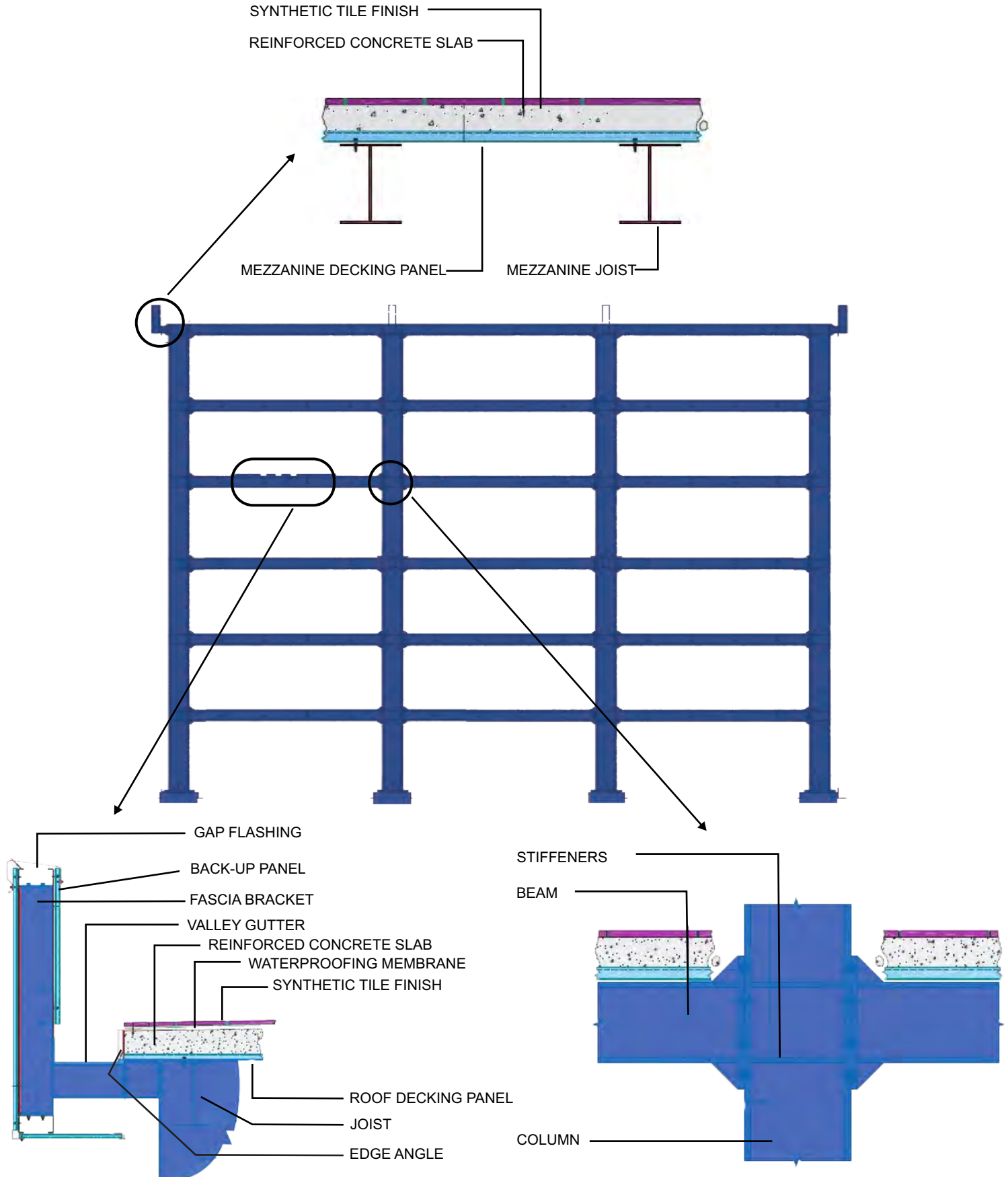
Multistory buildings with application of open web steel joists are very common for economical construction. Open web steel joists span between the primary framing members of the structure. Open web steel joists have long been used both as mezzanine joists in multi-storey buildings and as roof secondary members supporting roof sheeting panels and built-up roofs.



In Multistory commercial buildings, main framing beams and joists can be economically constructed using built-up plate sections which are the core components of the PEB system.



# MULTI STORY BUILDINGS FRAMING SYSTEM

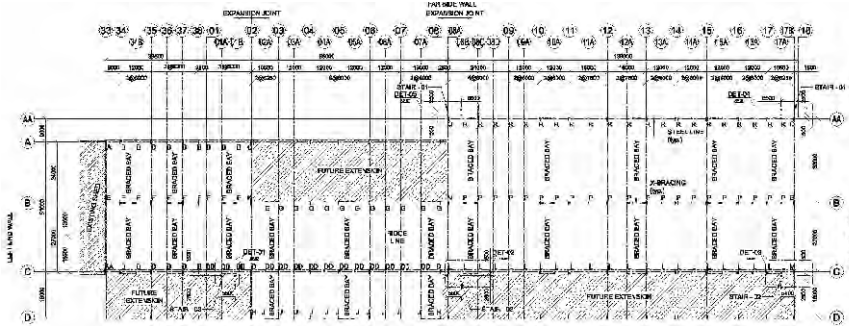




# ON GOING PROJECTS

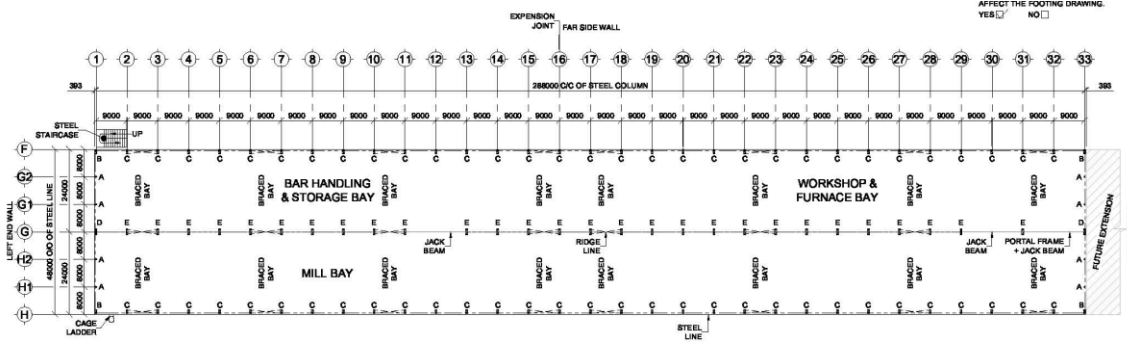
Agha Steel | Steel Mill

162,940 Sft



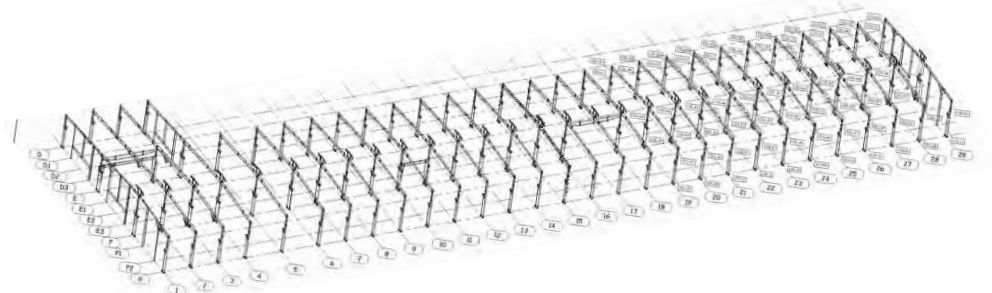
PSRM Steel | Rolling Steel Mill

149,601 Sft



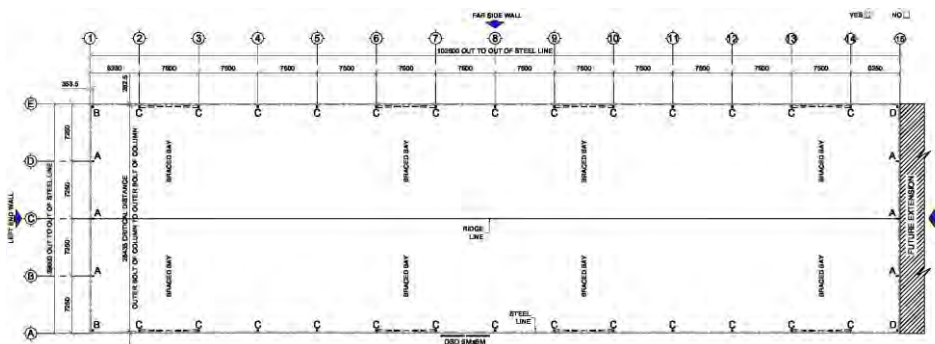
Sheikhoo Sugar Industries | Rolling Steel Mill

130,975 Sft



Amreli Steels | Machinery Storage Shed

32,000 Sft



# PROJECTS AT GLANCE

Fast Cable | Warehouse **110,000 Sft**



IRC | Spare Part Shed **104,220 Sft**



Dysin Automobile | Manufacturing Unit **98,000 Sft**



Ghani Glass | Warehouse **53,000 Sft**



Power China | Temporary Accommodations **38,000 Sft**



Ghani Ceramics | UTILITY BUILDING POWER HOUSE **22,000 Sft**



Power China | Multistory Buildings **11,000 Sft**



Gulpur Hydropower Project | Roofing System **4,000 Sft**



Platinum Steel | Steel Melting Shed **43,143 Sft**



Zaman Textiles | Loam Unit-I **29,000 Sft**



Rajby International | Roof Panel System **28,000 Sft**



Sazgar Autos | CKD Shed **25,500 Sft**



Eagles International | Rolling Mill **23,850 Sft**



CNA Engineering | Hanger Shed **16,932 Sft**



Imperial Textile | Textile Unit **15,179 Sft**



F.W.O | Auditorium **15,000 Sft**



# LIGHT GAUGE PRE FAB BUILDINGS

This technology uses lightweight steel frames. It offers several advantages such as speedy construction and erection, cost savings, etc. the steel skeleton for a small house can be produced in the factory and erected on site within a short time frame. The structure is then cladded on both sides by metal sheets or EPS Panels depending on usage. The resulting structure is weather and earthquake resistant.



## THE LGS ADVANTAGE

- Dimensionally Stable: does not expand or contract with moisture content
- Sustainable Green Building with Recyclable Materials
- Fastest Housing Technology
- Affordable & Long Lasting
- Does not Require Heavy Concrete Foundation
- Suitable for Extreme Climates as Structure is Fully Insulated
- Low Cost Housing
- Transportable Buildings

## LGS APPLICATIONS

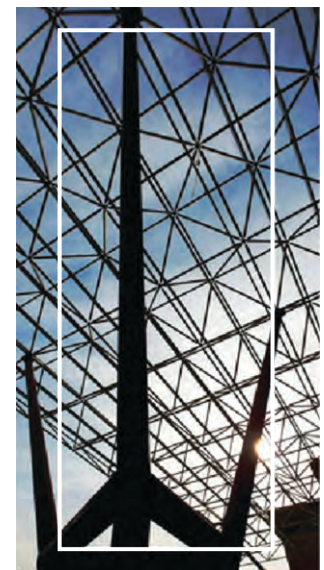
- Villas
- Social Housing
- Factory Internal Offices
- Primary Health Care Centers
- Schools
- Site Offices



# SPACE FRAME STRUCTURES

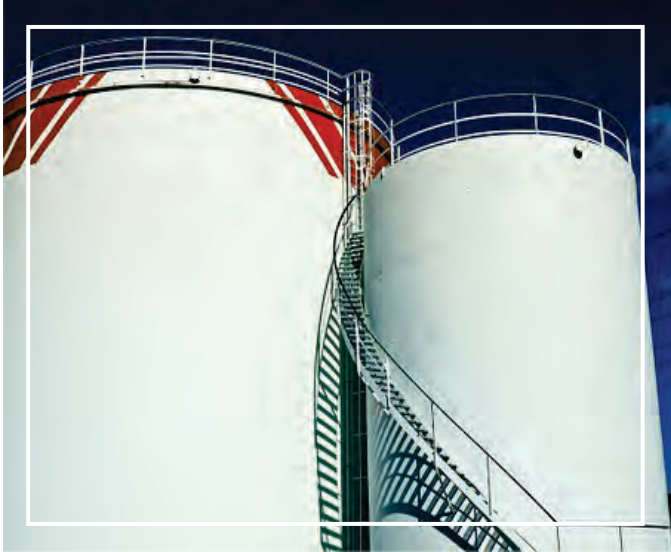
Hangers | Parking Sheds | Warehouse | Wide Span Buildings | Cash & Carry Halls | Expo Halls

Space frame structures are three dimensional load bearing structures which serve as an ideal solution for structures that require large column free spaces. The deflection of space frames is considerably less due to their integral stiffness. Columns are composite nature which means external pipe with concrete filled inside, which makes it unbending and durable for additional loadings. Space frames does not need additional Bracings. It has Nodal Connection at pivot point unless like traditional trusses with having welded joints. All pipes are connected to nodes made up of forged steel which transmits reaction forces.



# TANKS / VESSELS

- LPG Browsers
- Storage Tanks
- Silos
- Heat Exchanger
- Pressure Vessels
- Boilers



# UPPLE HADID SAFETY MEASURES

At Upple Hadid, people and environment is our ultimate preference towards our continuous improvement in health and safety. Our Health and Safety Policy is an important driver for safety consciousness within the company.

## Minimum Safety Requirement

- Workers should be familiar with all potential fall hazards on a construction site.
- Safety helmet, shoes and jacket should be worn while working on work site.
- All Personal Protective Equipment (PPE) should be checked prior to use.
- Employees and Worker should be checked if he is physically fit before working on site.



### ON-SITE TRAFFIC

Ensure traffic on the site is managed safely including road, rail, pedestrians and control unnecessary traffic congestion



### PROCESS SAFETY INCIDENTS

Identify potential process safety hazards which may cause explosions or fire and take adequate precautions



### FALLING OBJECTS

Ensure regular checks to remove or secure objects in risk areas



### WORKING AT HEIGHTS

Provide regular training, appropriate harnessing equipment and ensure safety checks are in place



### MOVING MACHINERY

Isolate, lock or pin all energy sources before any machinery is accessed

# UPPLE HADID MANUFACTURING FACILITY

Upple Hadid Pvt Ltd. manufacturing unit having most modernized machinery to enable high speed accurate production under the covered area of 270,000 sft which is among the largest PEB facilities in Pakistan. The production work is done with flexibility in combination of structural materials, Hot Rolled / Built-up Fabrication, Cold Forming, Storage Tanks and Sandwich Panels Production Section under supervision of professional quality control and inspection team.



# KEY VALUED CUSTOMERS



Building for Life



**DAELIM**



zaman  
textilemillsLtd.



RAJBY



## **Head Office**



230, St. No. 9 | Ext. Cavalry Ground  
Lahore | Pakistan.



+92 42 3662 5263



**UPPLE**  
Group



## **Manufacturing Unit**



2.5 Km, Raiwind Manga Road, Lahore.



+92 42 3539 8292-93

## **Karachi Office**



Office No. 504, 5th Floor, Marine Faisal Building,  
Block 6, PECHS, Main Shakra-e-Faisal, Karachi.



+92 21 3430 0336

## **Islamabad (Liaison Office)**



842, St. No. 33, G15/1, Islamabad.



+92 333 528 8186

