

HEAD OFFICE

230 | St. No. 9 | Extension Calvary Ground | Lahore.
Mob: +92-315-1000007
Email: info@upplegroup.com
Web: www.upplehadid.com

FACTORY

4-Km, Raiwind Manga Road,
Near Ravi Spinning Mill, Lahore



A RELIABLE SOLUTION FOR YOUR FUTURE



UPPLE PEB
PRE-ENGINEERED
BUILDINGS



PRE-ENGINEERED BUILDINGS

PEE stands for Pre Engineered Buildings. It can fulfill a wide range of structural and aesthetic design requirements. This flexibility allows PEBsto fulfill a vast range of building configurations, custom designs, requirements and applications. The technology offers several advantages over conventional concrete or steel structures, both in terms of cost and tFme savings.

APPLICATIONS

- Warehouses
- Air Craft Hangers
- Exhibition Halls
- Factories S Manufacturing Units
- * Multi-story Buildings
- Parking Sheds

RELEVANT INDUSTRIES

- Cement
- * Steel Rolling
- Textile
- Beverages
- Porta Cabins
- Defence Sector
- * Float Glass
- * Chemical
- * Dyeing
- * Metal Casting
- * Production Studios
- Steel Melting
- * AutoMobile
- * Spinning
- * Electronics Manufacturing
- * Ceramic

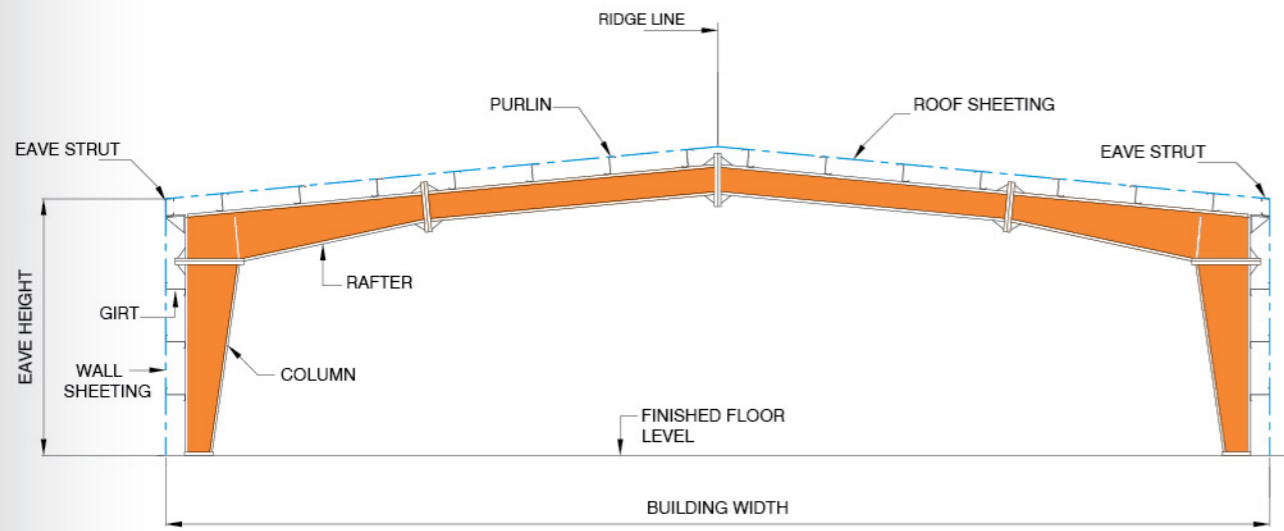
ABOUT US

Upple Hadid is Lahore based Steel Construction Company. We specialize in providing one window solution including design, fabrication and Installation of high quality Pre-Engineered Steel & Composite Buildings and Steel products. We provide customers with full steel structures solution such as factories, warehouses, high rise buildings, heavy industry, and Shopping malls.

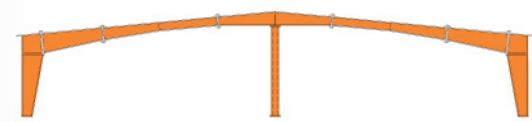
Upple Hadid has the unique capability to provide a combination of hot-rolled structure and pre-engineered buildings in a single design and package. It offers versatility in manufacture, dedication in service and commitment in deliveries.



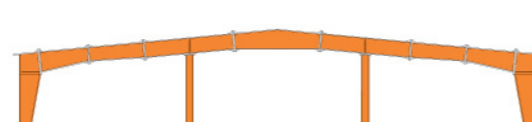
PRIMARY FRAMES AND SUB-SYSTEMS



CLEAR SPAN



MULTISPAN "1" (MS-1)



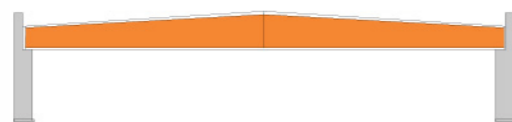
MULTISPAN "2" (MS-2)



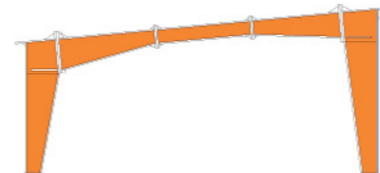
MULTISPAN "3" (MS-3)



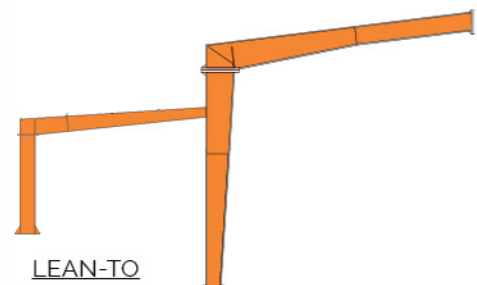
MULTIGABLE "1" (MG-1)



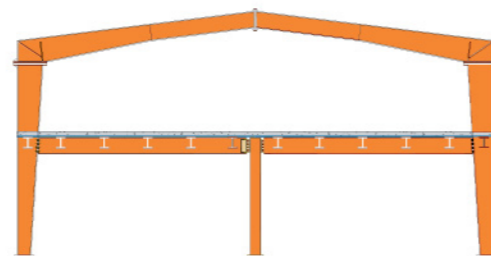
ROOFING SYSTEM



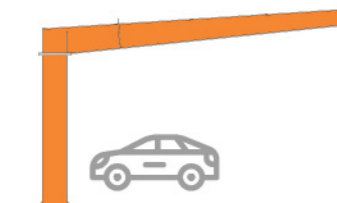
MONO SLOPE



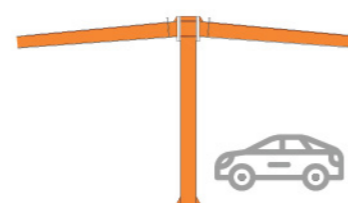
LEAN-TO



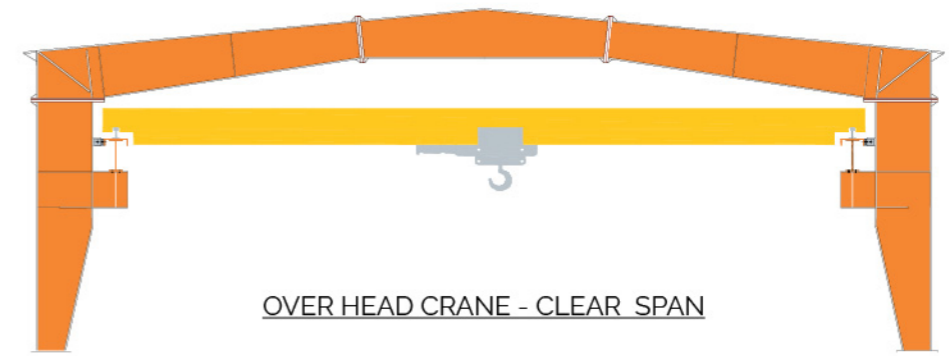
MEZZANINE



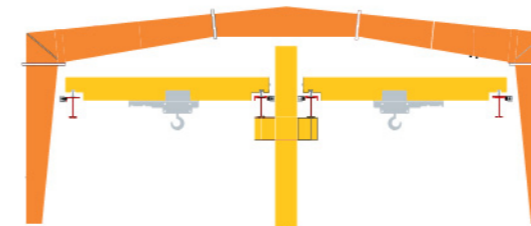
CANTILEVER PARKING



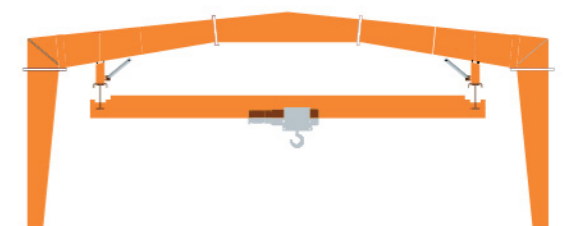
BUTTER-FLY PARKING



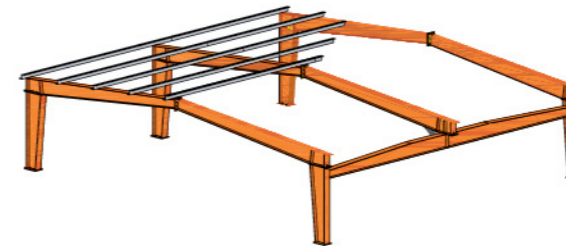
OVER HEAD CRANE - CLEAR SPAN



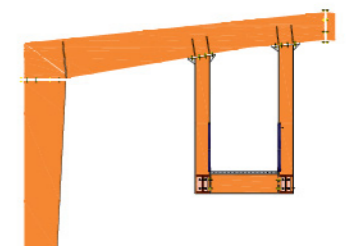
OVER HEAD CRANE - MULTI SPAN



UNDER-HUNG CRANE



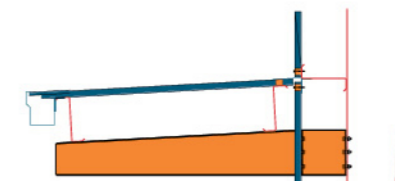
JACK BEAM



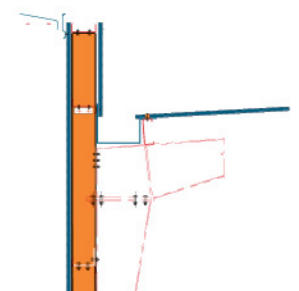
HANGING PLATFORM



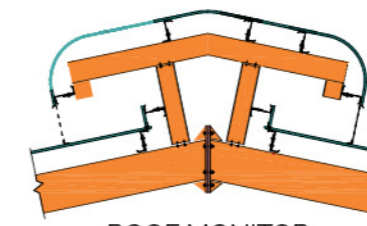
MULTI STORY



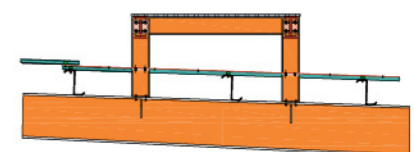
CANTILEVER CANOPY



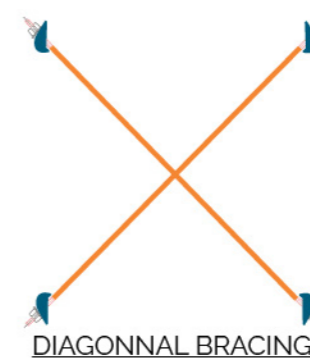
FASCIA



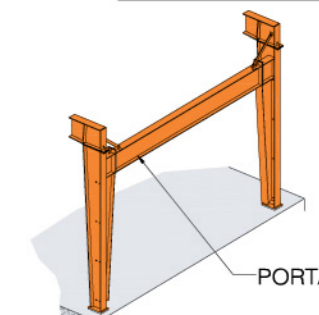
ROOF MONITOR



ROOF PLATFORM



DIAGONAL BRACING

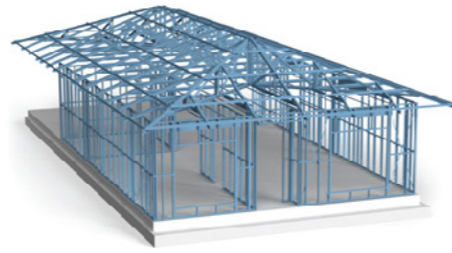


PORTAL FRAME

PORTAL BRACING

LIGHT GAUGE PRE FAB BUILDINGS

This technology uses lightweight steel frames. It offers several advantages such as speedy construction and erection, cost savings, etc. The steel skeleton for a small house can be produced in the factory and erected on site all within a short time frame. The structure is then cladded on both sides by metal sheets or EPS Panels depending on usage. The resulting structure is weather and earthquake resistant

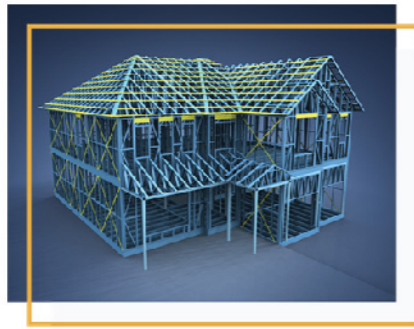


THE LGS ADVANTAGE

- Dimensionally stable: does not expand or contract with moisture content
- Sustainable Green Building with Recyclable materials
- Fastest Housing technology
- Affordable & long lasting
- Does not require heavy concrete foundation
- Suitable for extreme climates as structure is fully insulated
- Low Cost Housing
- Transportable Buildings

ENGINEERING & DESIGN SOFTWARE

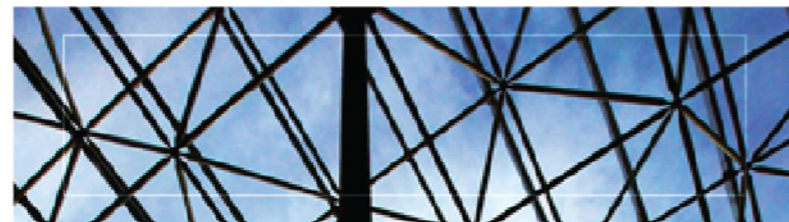
- Villas
- Social Housing
- Factory Internal Offices
- Primary Health Care Centers
- Schools
- Site offices



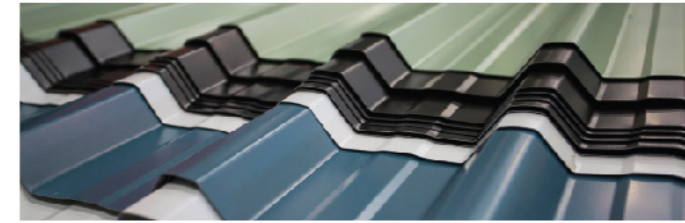
SPACE FRAME STRUCTURES

Hangers | Parking Sheds | Warehouse
Wide Span Buildings | Cash & Carry Halls | Expo Halls

Space Frame Structures are three dimensional load bearing structures which serve as an ideal solution for structures that require large column free spaces. The deflection of space frames is considerably less due to their integral stiffness. Columns are Composite nature which means external pipe with concrete filled inside, which makes it unbending and durable for additional loadings. Space frames does not need additional Bracings. It has Nodal Connection at pivot point unless like traditional trusses with having welded joints. All pipes are connected to nodes made up of forged steel which transmit reaction forces.



BUILDING ACCESSORIES



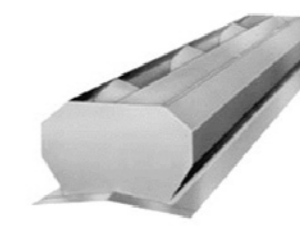
EXTERNAL CLADDING



INTERNAL LINER PANEL



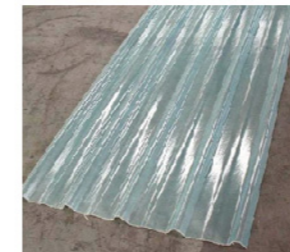
STANDING SEAM PANEL



RIDGE VENTILATOR



SLIDING DOORS



SKYLIGHTS



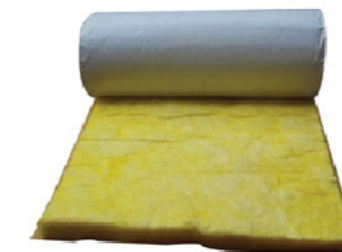
PERSONAL DOORS



LOUVERS



ROLL-UP SHUTTERS



GLASS WOOL INSULATION



POWER VENTILATORS



STEEL GRATING



CHECKERED PLATES



CABLE TRAYS